



LESSON

- * HISTORIC MOMENTS of ART + COLOR
- * INSPIRATIONAL USES of COLOR
- * HOW CARTOONS USE COLOR
- * WAYS color EFFECTS STORY
- * MODERN CARTOON COLOR STYLE *



PROJECT

- DESIGN + COLOR and ELEMENTAL GUARDIAN
- * PHOTOSHOP CSx TOOLS + SHORTCUTS
- * FINDING INSPIRATION!
- * THREE STAGE SKETCH
- * INK
- * COLOR BLOCKING
- * SATURATION and VALUE
- * BONUS: LINE COLOR and RIM LIGHT!

"Colors are Light's
Suffering + Joy."

-Goethe

GOOD
Mobility
Beauty

USEFULNESS
COMMON
SPIRITUAL

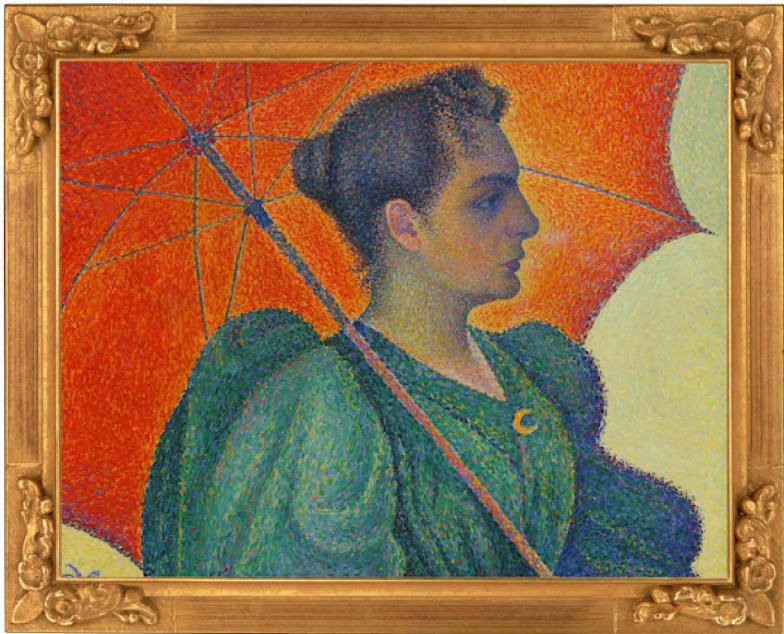


PP GOETHE ARGUED THERE IS NO COLOR IN THE PHYSICAL WORLD;
THERE ARE ONLY PATTERNS OF LIGHT + DARK.
THESE PATTERNS ARE A SENSATION PRODUCED BY OUR VERY SOULS.

NEO-IMPRESSIONISM

HENRI EDMOND CROSS

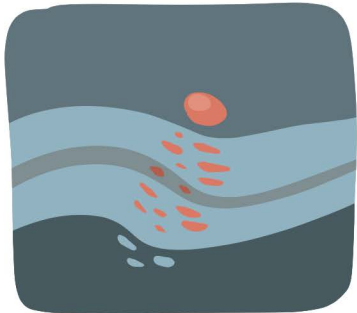
a study is HUMAN
RESPONSE
TO COLOR!



IMPRESSIONISM

CLAUDE MONET

a study in LIGHT'S
effect ON OBJECTS
emotions



POST-IMPRESSIONISM

PAUL CÉZANNE

USING COLOR TO
HIGHLIGHT REALITY



EXPRESSIONISM

EDVARD MUNCH

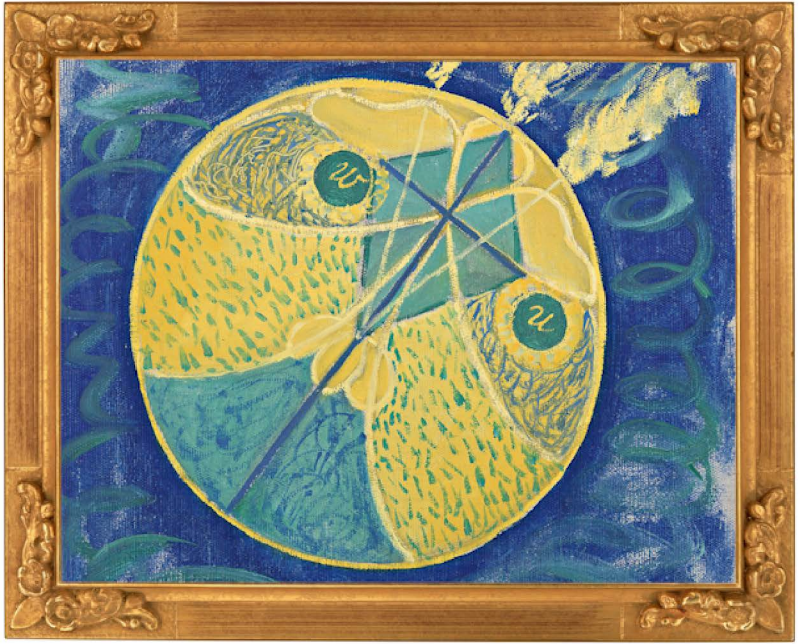
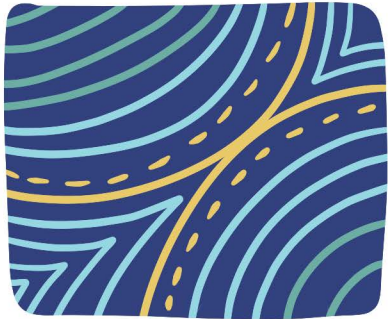
"COLOR AS THE
"INNER SELF" //



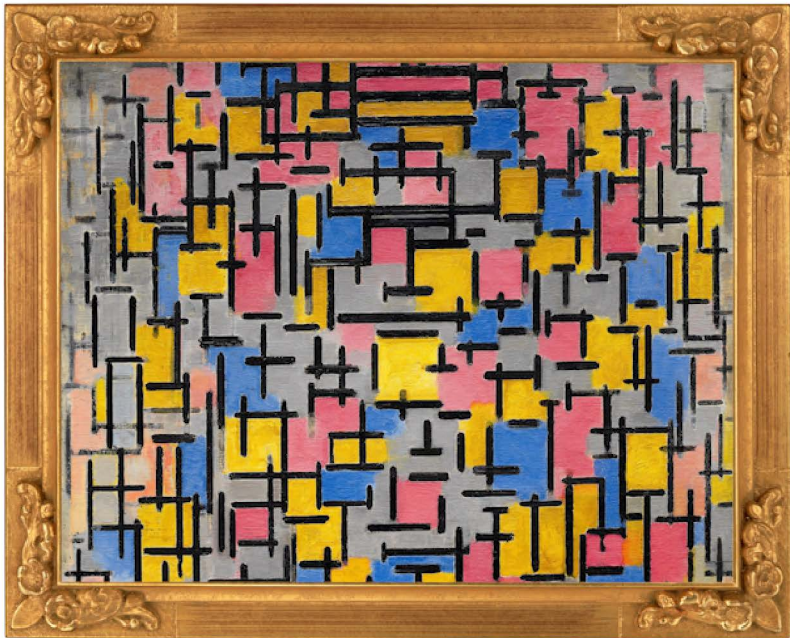
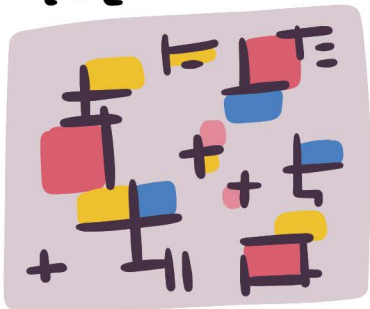
ABSTRACTIONISM

HILMA af KLINT

COLOR COMMUNICATES
OUR TRUE NATURE



ABSTRACTIONISM
PIET MONDRIAN
COLOR AS A
FUNDAMENTAL
QUALITY



"COLOR" IS x "DYNAMIC!"

IT GROWS AND - WATCH THIS STORY'S COLORS CHANGE WITH YOUR STORY! - CHANGE WITH CHARACTERS + THEIR ENVIRONMENTS + MOODS.



LET'S FOCUS ON THE IMPACT AND CONSEQUENCES OF COLOR CHOICES.

THIS little animation actually looks like a moving color script.

THEY MAP OUT THE COLOR, LIGHT and EMOTIONAL BEATS of a story.

LOOK at color script! (like animated films) LOONG story form telling

LEARN THIS STUFF THRU

EVOKE the NARRATIVE POWER OF COLOR BY USING IT TO...

*SUPPORT THE STORY.

*DESCRIBE A CHARACTER

*MAKE A THING STAND OUT.

CARTOONS USE COLOR TO...


BROADEN APPEAL!



EVOKE the FANTASTIC



REPRESENT INDIVIDUALITY



CREATE x NARRATIVE CONTRAST



KYLE'S DRAWING BOX

NON PHOTO BLUE

BRUSH
"B" - KEYBOARD
SHORT CUT

SMOOOTHING

0% 

"E" - ERASER
KEYBOARD
SHORT CUT

50% 

100% 

LEFT
BRACKET
SHRINK
BRUSH

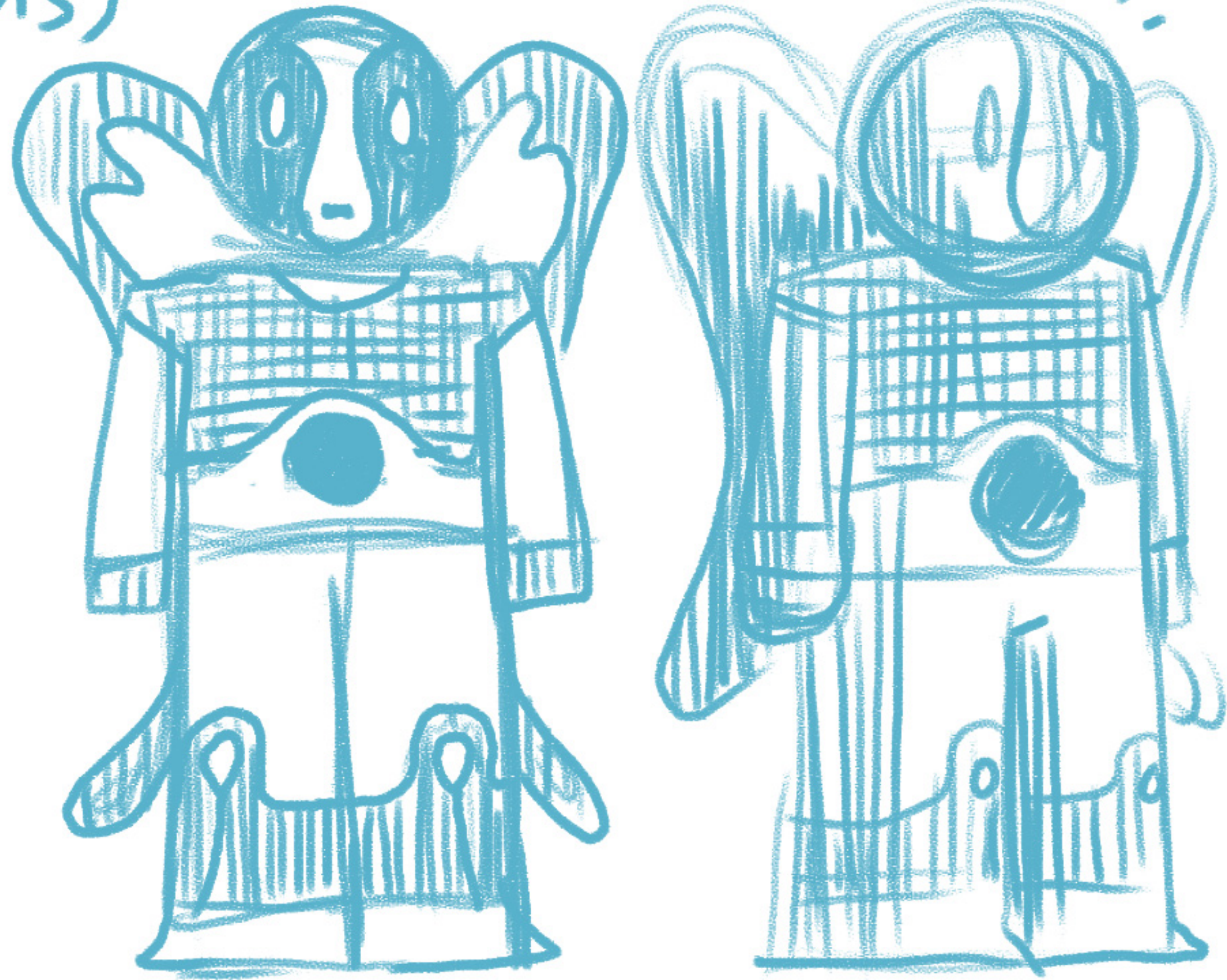
RIGHT
BRACKET
GROW
BRUSH

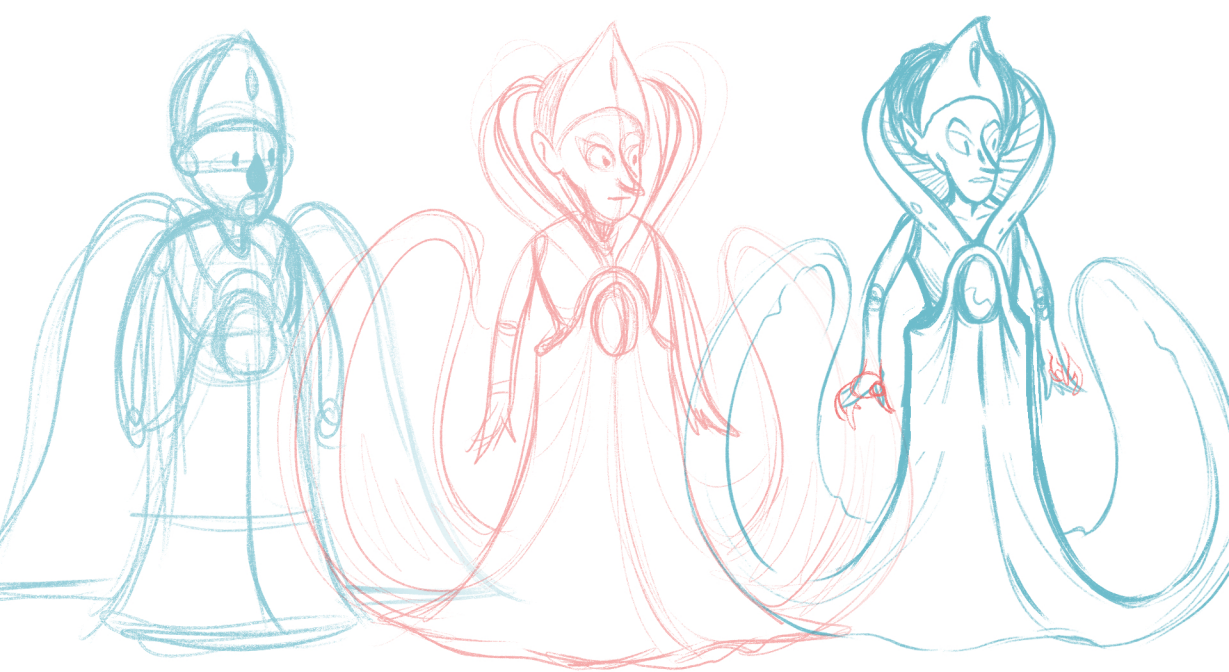


EYE DROPPER
COLOR SAMPLE
'ALT'
'OPTION'

ELEMENTAL GUARDIAN

- HUMAN PROPORTIONS
- SIMPLE DESIGN ELEMENTS
(BREAK UP FORMS)
- ADD FLORISH
- POINT of EMPHASIS
- CONSIDER CONTRAST
- 3/4 TURN







~ ~ ~ { COLOR styling ~ ~ ~

a set of guidelines that distinguish the look + FEEL of a visual narrative.



DEALING WITH CONTRAST



VALUE 
ENVIRONMENTS
IMPACT ON
YOUR COLOR!

